



**H.GURU INSTRUMENTS (NORTH INDIA) PVT. LTD.**  
AN ISO 9001 CERTIFIED COMPANY

“Concept to creation through design & development with Quality and Innovation”

Est. 1983





## ABOUT US

H.Guru Instruments ( North India) Pvt. Ltd. was established in 1983 with a mission to bring a positive revolution in the field of Industries and technology. It's expertise lies in the dedication and constant innovation of new applications to support the need of It's clients.

Built in a sprawling area of 1266 sq mtr the H.Guru Instruments ( North) emerged as an independent entity in the year 1983 with a motive of serving the clients with the most appropriate and suitable instruments according to the need of the present time. The company's vision is to bring the newest instrument in the global market prioritizing the convenience of the clients. The company also believes that it is due to their honorable customers that it has reached to the sky height of success. It is the consistent belief and trust of the customers that the company is rising and shining since the last three decades. With the extraordinary working skills of the staff it will definitely mark its excellence in the global market in the years to come! The company takes pride in it's extremely qualified and talented Mechanical Engineers. The dedicated team has left no stones unturned to produce the best quality of pressure and temperature measuring instruments and testing equipments which have satisfied the clients since decades. The reliable team, time to time updates it's knowledge according to the growing demand of the global market.

With our belief in the 3 D's of success ( discipline ,dedication and determination) and our holistic approach to excel, we are able to reach the expectations of our respectable clients. Keeping in mind the global warming and the pandemic times we deliver our products without harming the nature and in the most hygienic way. We highly understand the requirements of our clients and thus keep it as our utmost priority which makes us deliver excellent quality at a competitive price. We are in a continuous learning and growing process to achieve 100 % customer satisfaction.

### USES

Chemical Industry  
Petrochemical Industry  
Pharmaceutical  
Power plant / Boiler Plants /Steel Plant  
Refineries  
Refrigeration & Air-conditioning Industries  
Process Industry (Food Industries / Sugar Mills /Paper Mills)  
Infrastructure Industries (Real-estate & Fire Safety-Security)  
Sanitation Industry (Water Treatment plant)

## BOURDON OPERATED PRESSURE GAUGE (INDUSTRIAL TYPE)

Ref. Standard : IS 3624

Dial Size : 100, 150, 250 MM

Accuracy :  $\pm 1\%$

Sensing Element : Bourdon Tube (SS 316L)

Connection Material : SS 316

Gear Mechanism : SS 304

Case : SS 304 with Bayonet Bezel as a standard (SS 316 Optional) & Die cast Aluminum

Protection : Weatherproof to IP-67 (IS/IEC 60947 Part I)

Process Connection : 1/4", 3/8", 1/2", BSP & NPT Male, M 20 X 1.5

Dial : Aluminum white background with black letters

Pointer : Micrometer zero adjustable (Black aluminum)

Window : Plain / Toughened / Shatter proof glass

Mounting : Direct Bottom / Back entry / Surface with Bottom entry / Panel Back entry

Blow out disc : Provided

Suitability : -20 Deg C to +60 Deg C (Service Temperature)

Over range : 130% (FSD)

Optional : Glycerine Filled, Electric Contact

Accessories : Syphon, Gauge cock, Snubber, Needle valve, 2 way manifold.



### Table of Range :-

Kg/cm <sup>2</sup>	0 to 1	0 to 1.6	0 to 2	0 to 2.5	0 to 4	0 to 6	0 to 7	0 to 10	0 to 14	0 to 16	0 to 21	0 to 25	0 to 40	0 to 60	0 to 100	0 to 160	0 to 250	0 to 400	0 to 600
Bar	0 to 1	0 to 1.6	0 to 2	0 to 2.5	0 to 4	0 to 6	0 to 7	0 to 10	0 to 14	0 to 16	0 to 21	0 to 25	0 to 40	0 to 60	0 to 100	0 to 160	0 to 250	0 to 400	0 to 600

### Model Identification Code:-

Dial Size	Gauge Type	Bourdon / Movement / Connection	Case	Protection	Mounting
4 - 100 mm 6 - 150 mm 1 - 250 mm	P - Pressure	S - Bourdon S - Movement / Process Connection	A - Die cast aluminium S - SS 304	W - Weather Proof	2 - Bottom 5 - Back

## BOURDON OPERATED VACUUM / COMPOUND GAUGE

Ref. Standard : IS 3624

Dial Size : 100, 150, 250 mm

Accuracy :  $\pm 1\%$

Sensing Element : Bourdon Tube (SS 316L)

Connection Material : SS 316

Gear Mechanism : SS 304

Case : SS 304 with Bayonet Bezel as a standard (SS 316 Optional) & Die cast Aluminum

Protection : Weatherproof to IP-67 (IS/IEC 60947 Part I)

Process Connection : 1/4", 3/8", 1/2", BSP & NPT Male, M 20 X 1.5

Dial : Aluminum white background with black letters

Pointer : Micrometer zero adjustable (Black aluminum)

Window : Plain / Toughened / Shatter proof glass

Mounting : Direct Bottom / Back entry / Surface with Bottom entry / Panel Back entry

Blow out disc : Provided

Suitability : -20 Deg C to +60 Deg C (Service Temperature)

Over range : 130% (FSD)

Optional : Glycerine Filled

Accessories : Syphon, Gauge cock, Snubber, Needle valve , Valve manifold



Table of Range :-

MmHg	-760 to +0										
Kg/cm2	-1 to +1	-1 to +1.5	-1 to +3	-1 to +5	-1 to +6	-1 to +7	-1 to +9	-1 to +13	-1 to +15	-1 to +20	-1 to +24

Model Identification Code:-

Dial Size	Gauge Type	Bourdon / Movement / Connection	Case	Protection	Mounting
4 - 100 mm	V- Vacuum	S – Bourdon	A - Die cast aluminium	W – Weather Proof	2 – Bottom
6 - 150 mm	C- Compound	S – Movement / Process Connection	S - SS 304		5 – Back
1 – 250 mm					

## COMMERCIAL TYPE PRESSURE GAUGE

Ref. Standard : IS 3624

Dial Size : 100, 150

Accuracy :  $\pm 2\%$

Sensing Element : Bourdon Tube (Brass / Non ferrous)

Connection Material : Brass / Non ferrous

Gear Mechanism : Brass / Non ferrous

Case : Mild Steel & SS 304

Process Connection : 3/8" BSP M

Dial : Aluminum white background with black letters

Pointer : Push fit (Black aluminum)

Window : Plain Glass

Mounting : Direct Bottom entry & Surface Mounting with Bottom entry

Optional : Glycerine Filled

Accessories : Syphon, Ball Valve

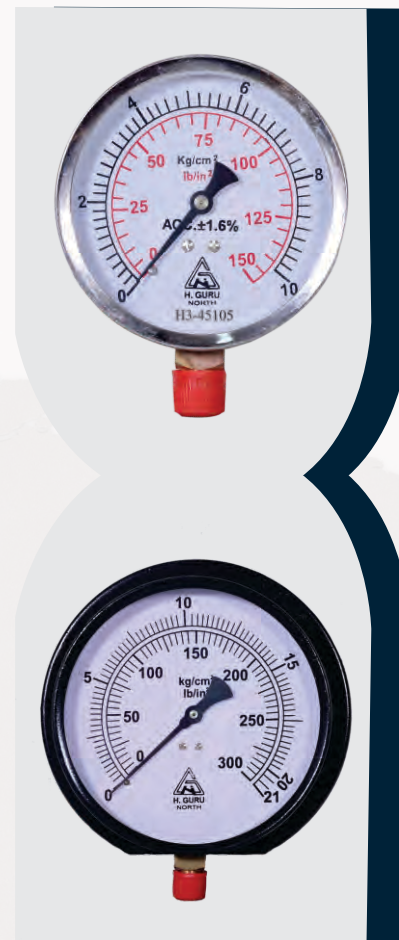


Table of Range :- NOTE : VACUUM / COMPOUND GAUGE are available

Kg/cm <sup>2</sup>	0 to 1	0 to 2	0 to 4	0 to 7	0 to 10	0 to 14	0 to 16	0 to 21	0 to 28	0 to 35	0 to 40	0 to 70
MmHg	-760 to +0											
Kg/cm <sup>2</sup>	-1 to +1	-1 to +2	-1 to +3	-1 to +7	-1 to +10	-1 to +16	-1 to +21					

Model Identification Code:-

Dial Size	Gauge Type	Bourdon / Movement / Connection	Case	Mounting
4 - 100 mm	P - Pressure	N - Bourdon	M - Mild Steel	2 - Bottom
6 - 150 mm	V - Vacuum	N - Movement	S - Stainless Steel	1 - Surface
	C - Compound	N - Process Connection		

## DIAPHRAGM SEAL PRESSURE GAUGE

Ref. Standard : IS 3624

Dial Size : 100, 150 mm

Accuracy :  $\pm 1\%$

Sensing Element : Bourdon (SS 316L)

Connection Material : SS 316

Gear Mechanism : SS 304

Protection Element: Diaphragm SS 316L (Teflon coating, Teflon Lining (Optional))

Case : SS 304 with Bayonet Bezel as a standard (SS 316 Optional) & Die cast aluminum

Protection : Weatherproof to IP-67 (IS/IEC 60947 Part I)

Top Chamber: SS 304

Bottom Chamber : SS 316

Filled Fluid : Silicone Oil

Process Connection : 3/8", 1/2", BSP & NPT Male, M 20 X 1.5, Flange

Dial : Aluminum white background with black letters

Pointer : Micrometer zero adjustable (Black aluminum)

Window : Plain / Toughened / Shatter proof glass

Mounting : Direct Bottom / Back entry / Surface with Bottom entry / Panel Back entry

Blow out disc : Provided

Suitability : -20 Deg C to +60 Deg C (Service Temperature)

Over range : 130% (FSD)

Optional : Glycerine Filled, Electric Contact,

Accessories : Syphon, Gauge cock, Snubber, Needle valve, Valve manifold



Table of Range :- NOTE : VACUUM / COMPOUND GAUGE are available

Kg/cm <sup>2</sup>	0 to 1	0 to 1.6	0 to 2	0 to 2.5	0 to 4	0 to 6	0 to 7	0 to 10	0 to 14	0 to 16	0 to 21	0 to 25	0 to 40	0 to 40	0 to 60	0 to 100	0 to 160	0 to 250
Bar	0 to 1	0 to 1.6	0 to 2	0 to 2.5	0 to 4	0 to 6	0 to 7	0 to 10	0 to 14	0 to 16	0 to 21	0 to 25	0 to 40	0 to 40	0 to 60	0 to 100	0 to 160	0 to 250

Model Identification Code:-

Dial Size	Gauge Type	Bourdon / Movement / Connection	Case	Protection	Mounting
4 - 100 mm 6 - 150 mm	P - Pressure D - Diaphragm (Seal)	S - Bourdon/Movement /Process Connection S - Chamber	A - Die cast alluminium S - SS 304	W - Weather Proof	2 - Bottom 5 - Back

## SCHAFFER DIAPHRAGM PRESSURE GAUGE

Ref. Standard : IS 3624

Dial Size : 100, 150 mm

Accuracy :  $\pm 1.5\%$

Connection Material : SS 316

Gear Mechanism : Non Ferrous

Sensing Element: Diaphragm SS 316L /Alloy Steel

Case : SS 304 with Bayonet Bezel as a standard (SS 316 Optional) & Die cast aluminum

Protection : Weatherproof to IP-67 (IS/IEC 60947 Part I)

Top Chamber: Die cast aluminum & SS 304

Bottom Chamber : SS 304 / SS 316

Process Connection : 3/8", 1/2", BSP & NPT Male, M 20 X 1.5

Dial : Aluminum white background with black letters

Pointer : Micrometer zero adjustable (Black aluminum)

Window : Plain /Toughened / Shatter proof glass

Mounting : Direct Bottom entry

Suitability : -20 Deg C to +60 Deg C (Service Temperature)

Over range : 130% (FSD)

Accessories : Syphon, Gauge cock, Snubber, Needle valve ,Valve Manifold



Table of Range :- NOTE : VACUUM / COMPOUND GAUGE are available

Mmwc	0 to 400	0 to 600	0 to 1000	0 to 1600	0 to 2000	0 to 2500	0 to 4000	0 to 6000		
Kg/cm <sup>2</sup>	0 to 1	0 to 2	0 to 2.5	0 to 4	0 to 6	0 to 7	0 to 10	0 to 14	0 to 16	0 to 21

Model Identification Code:-

Dial Size	Gauge Type	Bourdon / Movement / Connection	Case	Protection	Mounting
4 - 100 mm 6 - 150 mm	P - Pressure D - Diaphragm	N - Movement S - Process Connection/ Chamber	A - Die cast aluminium S - SS 304	W - Weather Proof	2 - Bottom



## CAPSULE TYPE PRESSURE GAUGE

Ref. Standard : IS 3624

Dial Size : 100, 150 mm

Accuracy :  $\pm 1.5\%$

Connection Material : SS 316L

Gear Mechanism : Brass / Non ferrous

Sensing Element: Capsule (SS316/ Non-Ferrous)

Case : SS 304 with Bayonet & Bezel & Die cast aluminum

Protection : Weatherproof to IP-67 (IS/IEC 60947 Part I)

Process Connection : 3/8", 1/2", BSP & NPT Male, M 20 X 1.5

Dial : Aluminum white background with black letters

Pointer : Micrometer zero adjustable (Black aluminum)

Window : Plain glass & Toughened glass

Mounting : Direct with Bottom entry/ Back entry

Suitability : -20 Deg C to +60 Deg C (Service Temperature)

Over range : 130% (FSD)

Accessories : Syphon, Gauge cock, Snubber, Needle valve



Table of Range :- NOTE : VACUUM / COMPOUND GAUGE are available

Mmwc	0 to 400	0 to 600	0 to 1000	0 to 1600	0 to 2000	0 to 2500	0 to 4000	0 to 6000
------	----------	----------	-----------	-----------	-----------	-----------	-----------	-----------

Model Identification Code:-

Dial Size	Gauge Type	Bourdon / Movement / Connection	Case	Protection	Mounting
4 - 100 mm 6 - 150 mm	P - Pressure C - Capsule	N - Movement S - Process Connection	A - Die cast aluminum S - SS 304	W - Weather Proof	2 - Bottom 5 - Back

## DRAUGHT GAUGE (PRESSURE)

Ref. Standard : IS 3624

Dial Size : 150X78 & 200X104 mm

Accuracy :  $\pm 1.5\%$

Connection Material : SS 316

Gear Mechanism : Non ferrous

Sensing Element: Bellow Diaphragm SS316/ Non-ferrous

Case : Press Steel Fabricated Body (Sheet Metal)

Process Connection : 1/4" BSP (M)

Dial : Aluminum white background with black letters

Window : Acrylic glass

Mounting : Direct Back entry

Suitability : -20 Deg C to +60 Deg C (Service Temperature)

Over range : 130% (FSD)



Table of Range :- NOTE : VACUUM / COMPOUND GAUGE are available

Mmwc	-25 to +25	0 to 50	0 to 100	0 to 250	0 to 400	0 to 600	0 to 1000
------	------------	---------	----------	----------	----------	----------	-----------

Model Identification Code:-

Dial Size	Gauge Type	Bourdon / Movement / Connection	Case	Mounting
6 - 150 mm 8 - 200 mm	P - Pressure B - Bellow	N - Ferrous - Movement S - Process Connection	M - Fabricated Body (Mild Steel)	5- Back

## DIFFERENTIAL PRESSURE GAUGE

Ref. Standard : IS 3624

Dial Size : 150 mm

Accuracy :  $\pm 1.5\%$

Sensing Element: Diaphragm SS 316 /Alloy Steel

Gear Mechanism : SS 304

Case : Die cast aluminum & SS 304 with Bayonet Bezel as a standard

Protection : Weatherproof to IP-67 (IS/IEC 60947 Part I)

Chamber: SS 304

Process Connection : 1/4" NPT (F) (1/2, BSP & NPT Male, M 20 X 1.5 through adopter)

Dial : Aluminum white background with black letters

Pointer : Micrometer zero adjustable (Black aluminum)

Window : Acrylic / Shatterproof Glass

Mounting : Direct with Bottom & Back entry

Suitability : -20 Deg C to +60 Deg C (Service Temperature)

Over range : 130% (FSD)

Optional : Electric Contact,

Accessories : 3Way / 5 Way Manifold



Table of Range :- NOTE : VACUUM / COMPOUND GAUGE are available

Mmwc	0 to 400	0 to 600	0 to 1000	0 to 1600	0 to 2000	0 to 2500	0 to 4000	0 to 6000			
Kg/cm <sup>2</sup>	0 to 1	0 to 2	0 to 2.5	0 to 4	0 to 6	0 to 7	0 to 10	0 to 14	0 to 16	0 to 21	0 to 25

Model Identification Code:-

Dial Size	Gauge Type	Bourdon / Movement / Connection	Case	Protection	Mounting
6 - 150 mm	D - Differential P - Pressure	S - Movement S - Chamber	A - Die cast aluminium S - SS 304	W - Weather Proof	2- Bottom 5- Back

## MERCURY IN STEEL RIGID STEM TYPE TEMPERATURE GAUGE

Ref. Standard : EN 13190

Dial Size : 100, 150 mm

Accuracy :  $\pm 1\%$

Bourdon Tube : SS 316L

Connection Material : SS 316

Gear Mechanism : SS 304

Case : SS 304 with Bayonet Bezel as a standard (SS 316 Optional) & Die cast Aluminum

Protection : Weatherproof to IP-67 (IS/IEC 60947 Part I)

Process Connection : 3/8, 1/2, BSP & NPT Male, M 20 X1.5 (Adjustable length 2000mm max)

Dial : Aluminum white background with black letters

Pointer : Micrometer zero adjustable (Black aluminum)

Bulb / Stem Dia : 12/9, 10/9 & 8/8

Bulb / Stem Material : SS 316

Window : Plain / Toughened / Shatter Proof Glass

Mounting : Direct Bottom / Back entry

Over range : 130% (FSD)

Optional : Glycerine Filled, Electric Contact

Accessories : Thermowell



Table of Range :-

°C	-38 to +50	0 to 50	0 to 100	0 to 120	0 to 150	0 to 200	0 to 250	0 to 300	0 to 400	0 to 500	0 to 600

Model Identification Code:-

Dial Size	Gauge Type	Bourdon / Movement / Connection	Case	Protection	Mounting
4 - 100 mm	H - Mercury (Hg)	S - Bourdon / Movement	A - Die cast aluminium	W - Weather Proof	3 - Bottom
6 - 150 mm	R - Rigid	S - Process Connection / Stem / Bulb	S - SS 304		7 - Back

## MERCURY IN STEEL DISTANCE TYPE TEMPERATURE GAUGE

Ref. Standard : EN 13190

Dial Size : 100, 150 mm

Accuracy :  $\pm 1\%$

Bourdon Tube : SS 316L

Connection Material : SS 316

Gear Mechanism : SS 304

Case : SS 304 with Bayonet Bezel as a standard

(SS 316 Optional) / Die cast aluminium

Protection : Weatherproof to IP-67 (IS/IEC 60947 Part I)

Process Connection : 3/8, 1/2, BSP & NPT Male, M 20 X 1.5

(Adjustable length 300 mm max)

Dial : Aluminum white background with black letters

Pointer : Micrometer zero adjustable (Black Aluminum)

Capillary : SS 304 Sheath (SS 304 Armour & PVC cover Optional)

Capillary length: 3 metre std.(upto 30 metre)

Bulb / Stem Dia : 12/9, 10/9 & 8/8

Bulb / Stem Material : SS 316

Window : Plain / Toughened / Shatter Proof glass

Mounting : Projection or Surface with bottom/ Panel with back entry

Over range : 130% (FSD)

Optional : Glycerine Filled, Electric Contact

Accessories : Thermowell



Table of Range :-

°C	-38 to +50	0 to 50	0 to 100	0 to 120	0 to 150	0 to 200	0 to 250	0 to 300	0 to 400	0 to 500	0 to 600
----	------------	---------	----------	----------	----------	----------	----------	----------	----------	----------	----------

Model Identification Code:-

Dial Size	Gauge Type	Bourdon / Movement / Connection	Case	Protection	Mounting
4 - 100 mm	H - Mercury (Hg)	S - Bourdon / Movement	A - Die cast aluminium	W - Weather Proof	1 - Bottom
6 - 150 mm	D - Distance	S - Process Connection / Stem / Bulb	S - SS 304		5 - Back

## GAS FILLED RIGID STEM TEMPERATURE GAUGE

Ref. Standard : EN 13190

Dial Size : 100, 150 mm

Accuracy :  $\pm 1\%$

Bourdon Tube : SS 316L

Connection Material : SS 316

Gear Mechanism : SS 304

Case : Die cast aluminum & SS 304 with Bayonet Bezel as a standard  
(SS 316 Optional)

Protection : Weatherproof to IP-67 (IS/IEC 60947 Part I)

Process Connection : 3/8, 1/2, BSP & NPT Male, M 20 X 1.5

(Adjustable length 2000 mm max)

Dial : Aluminum white background with black letters

Pointer : Micrometer zero adjustable (Black aluminum)

Bulb / Stem Dia : 12/9, 10/9 & 8/8

Bulb / Stem Material : SS 316

Window : Plain & Toughened glass

Mounting : Direct Bottom & Back entry

Over range : 130% (FSD)

Optional : Glycerine Filled, Electric Contact

Accessories : Thermowell



Table of Range :-

°C	0 to 100	0 to 120	0 to 150	0 to 200	0 to 300
----	----------	----------	----------	----------	----------

Model Identification Code:-

Dial Size	Gauge Type	Bourdon / Movement / Connection	Case	Protection	Mounting
4 - 100 mm	G - Gas	S - Bourdon / Movement	A - Die cast aluminium	W - Weather Proof	3 - Bottom
6 - 150 mm	R - Rigid	S - Process Connection / Stem / Bulb	S - SS 304		7 - Back

## GAS FILLED DISTANCE TYPE TEMPERATURE GAUGE

Ref. Standard : EN 13190

Dial Size : 100, 150 mm

Accuracy :  $\pm 1\%$

Bourdon Tube : SS 316L

Connection Material : SS 316

Gear Mechanism : SS 304

Case : Die cast aluminum & SS 304 with Bayonet Bezel as a standard  
(SS 316 Optional)

Protection : Weatherproof to IP-67 (IS/IEC 60947 Part I)

Process Connection : 3/8, 1/2, BSP & NPT Male, M 20 X 1.5

(Adjustable length 300 mm max)

Dial : Aluminum white background with black letters

Pointer : Micrometer zero adjustable (Black Aluminum)

Capillary : SS 304 Sheath (SS 304 Armour & PVC cover Optional)

Capillary Length : 3 metre

Bulb / Stem Dia : 12/9, 10/9 & 8/8

Bulb / Stem Material : SS 316

Window : Plain & Toughened glass

Mounting : Projection with Bottom & Panel Mounting with Back entry

Over range : 130% (FSD)

Optional : Glycerine Filled, Electric Contact

Accessories : Thermowell



Table of Range :-

°C	0 to 100	0 to 120	0 to 150	0 to 200	0 to 300

Model Identification Code:-

Dial Size	Gauge Type	Bourdon / Movement / Connection	Case	Protection	Mounting
4 - 100 mm	G - Gas	S - Bourdon / Movement	A - Die cast aluminium	W - Weather Proof	1 - Bottom
6 - 150 mm	D - Distance	S - Process Connection / Stem / Bulb	S - SS 304		5 - Back

## BIMETALIC TEMPERATURE GAUGE

Ref. Standard : EN 13190

Dial Size : 100, 150 mm (SS 304)

Accuracy :  $\pm 1\%$

Case : SS 304 with Bayonet Bezel

Protection : Weatherproof to IP-67 (IS/IEC 60947 Part I)

Process Connection : 3/8, 1/2, BSP & NPT Male, M 20 X 1.5

(Adjustable length 500 mm max)

Dial : Aluminum white background with black letters

Pointer : Micrometer zero adjustable (Black aluminum)

Stem Dia : 6/8/10 MM (Uniform)

Bulb / Stem Material : SS 304 SS 316

Window : Plain / Toughened / Shatter Proof Glass

Mounting : Direct Bottom / Back entry

Over range : 130% (FSD)

Accessories : Thermowell / Glycerine Filled



Table of Range :-

°C	-20 to +60	0 to 50	0 to 60	0 to 100	0 to 120	0 to 150	0 to 200	0 to 250	0 to 300
----	------------	---------	---------	----------	----------	----------	----------	----------	----------

Model Identification Code:-

Dial Size	Gauge Type	Bourdon / Movement / Connection	Case	Protection	Mounting
4 - 100 mm 6 - 150 mm	B- Bimetal R- Rigid	S-Process Connection / Stem	S- SS 304	W- Weather Proof	3- Bottom 7- Back



## INDUSTRIAL THERMOMETER

Dial Size : 225 X 50 mm

Accuracy :  $\pm 2\%$

Filling Liquid : Alcohol

Case : Mild Steel

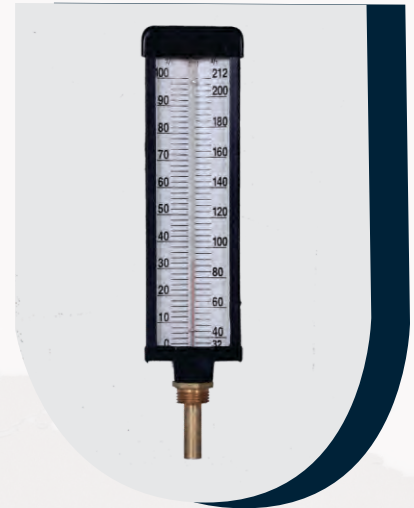
Process Connection :  $\frac{1}{2}$ " BSP (M)

Window : Plain Glass

Mounting : Direct Bottom entry

°C	0 to 50	0 to 100
----	---------	----------

Dial Size	Gauge Type	Case	Mounting
9 - 225 mm	I- Industrial	M - Mild Street	3 - Bottom



## V FORM THERMOMETER

Dial Size : 200 X 28 mm

Accuracy :  $\pm 2\%$

Filling Liquid : Blue Mercury/ Alcohol

Case : Aluminum

Process Connection :  $\frac{1}{2}$ " BSP (M)

Window : Plain Glass

Mounting : Direct Bottom entry

°C	0 to 50	0 to 100
----	---------	----------

Dial Size	Gauge Type	Case	Mounting
9 - 200 mm	V V Form	Die Cast Aluminum	3 - Bottom

## U TYPE & PIGTAIL TYPE SYPHON

A pressure gauge siphon is a simple device used to protect a pressure sensor from high-temperature media, such as steam. It can also be used to reduce the potentially damaging effects of rapid pressure changes.

**Material : SS 304, SS 316**

**Process Connection :  $\frac{3}{8}$ ",  $\frac{1}{2}$ " BSP & NPT (Male X Female)**



## 2 WAY & 3 WAY GAUGE COCK



2 Way Gauge Cock provides isolation of the instrument.  
In 3 Way Gauge Cock there is provision for isolation as well as vent (drain).

**Material : SS 304, SS 316**

**Process Connection : 3/8" , 1/2" BSP & NPT (Male / Female)**

## SNUBBER / DAMPER

A pressure gauge snubber is a device used to suppress ("snub") excess force or rapid movement in mechanical systems. It's action provides more accurate pressure indication and extends the life and calibration of the pressure gauge. Pressure snubbers are designed to dampen the effect of pressure pulses and spikes to assure longer service life and readability of pressure gauges in harsh applications

**Material : SS 304, SS 316**

**Process Connection : 1/4" , 3/8" , 1/2" BSP & NPT (Male X Female)**



## NEEDLE VALVE

A needle valve is used to accurately control flow rates of clean gasses or liquids. These valves generally have low flow rates and a relatively significant pressure drop from the inlet to the outlet. Needle valves are used to regulate the pressure inside a device. It helps to ensure that the appliance is running at maximum efficiency, without excess water or gas being used.

**Material : SS 304, SS 316**

**Process Connection : 3/8" , 1/2" BSP & NPT (Male / Female)**

## 2 WAY / 3 WAY / 5 WAY MANIFOLD VALVE

The purpose of an instrumentation manifold for pressure gauges is to block the process flow in the system so that the process media (upstream and downstream) can be isolated from the instrumentation. The procedure is to close the block valve and open the drain valve. 2 Way Manifold Valve For Pressure Gauge is also known as the block and bleed valve. 3 Way Manifold Valve is one such type that is used to confirm that the block is not over ranged. It has 2 block valves and one drain valve. 5-Valve Manifold can be mounted to differential pressure gauges. This manifold features two isolation valves, two equalizing valves, and a bleed

**Material : SS 304, SS 316**

**Process Connection : 1/2" NPT Female X Female or  
1/2" NPT Female X Female X 1/4" Female**



## THERMOWELL

A thermowell is a pressure-tight vessel that safeguards and increases the lifespan of temperature sensors in processing. A thermowell is installed directly into piping systems..

**Material : SS 304, SS 316**

**Process Connection : 3/8", 1/2" BSP & NPT  
(Male X Female) Flanged**

## OUR CLIENTELE



**H. GURU INSTRUMENTS (NORTH INDIA) PVT. LTD.**

### CONNECT WITH US:

59/2/20, Site IV, Industrial Area,

Sahibabad – 201010, Ghaziabad, (UP)

Phone : 0120-4167428 ,M +91-9873909744 / 9953110613

Email: [h.gurunorth@gmail.com](mailto:h.gurunorth@gmail.com) | Web: [www.hgurunorth.in](http://www.hgurunorth.in)

